

OFFICIAL #	1090425	ABS#	NA	CLASS	Load Line only
-------------------	---------	-------------	----	--------------	----------------



VESSEL DESCRIPTION

Type	Deck Barge
Service	Unrestricted
Cargo	General Cargo, Containers, Aggregate
Home Port	Palmer, AK
Build Date	2000
Builder	Orange
Wear Deck	Durabase Matts

CAPACITY

Usable Deck	6,580 Sq. Ft.
Max Deck Load	2,500 Psf.
Ramp Width	16 Ft. 8 In.
Ramp Length	25 Ft.
Ramp Capacity	50 short tons
Ramp Weight	25,000 Lbs.
Side Keys	2 ea 25' wide

COMMENTS

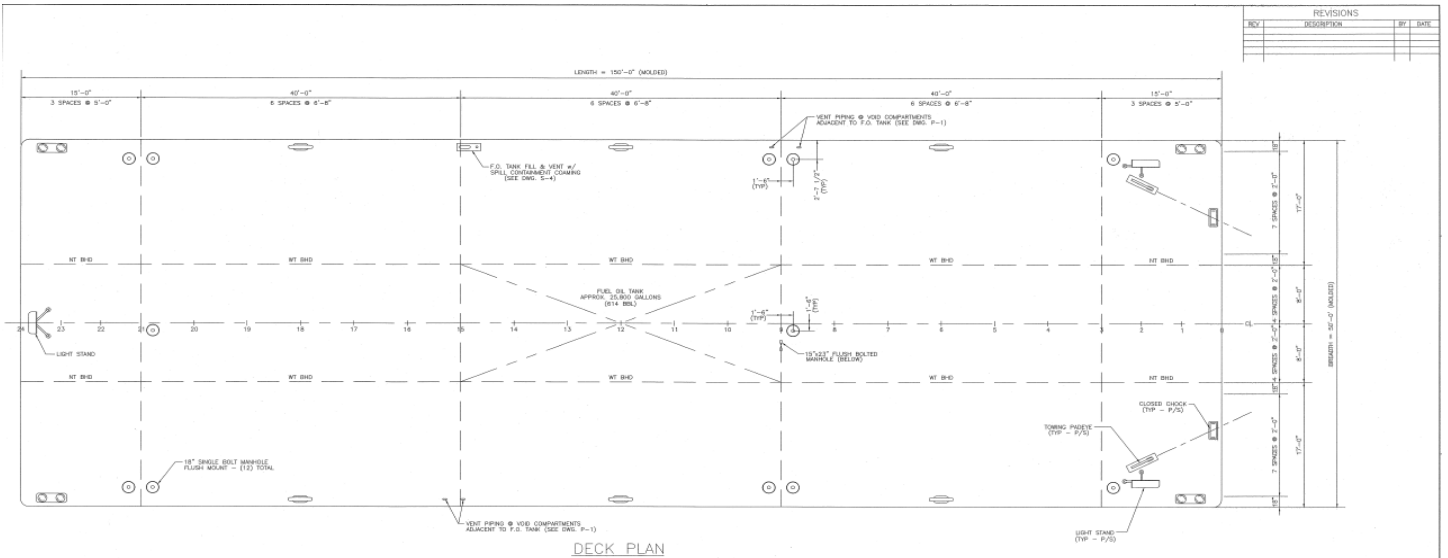
Former Name	SALCHA
-------------	--------

MACHINERY

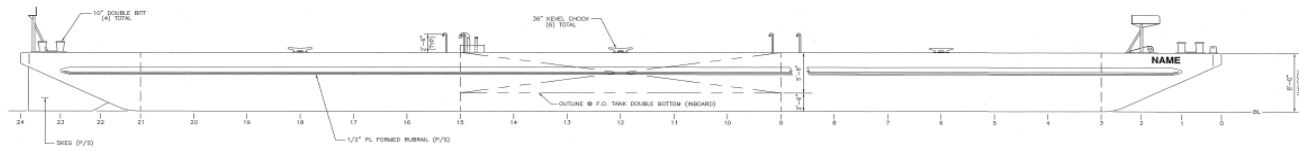
HPU	Kubota
Anchor Winch	Cable 1.125" x700' w 2K anchor
deck winch	Pull Master M12
Ramp	Pull Master M12
Generator	Honda 6500 Portable

DIMENSIONS

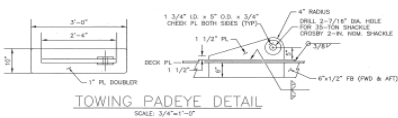
Gross Ton	416
ITC GR Tons	416
ITC Net Tons	124
Draft Min	18 In.
Draft Max	7 Ft.
Reg. Length	144 Ft.
Reg. Width	50 Ft.
Reg. Depth	8 Ft.
LOA	150 Ft.
Inner Tanks	1 double bottom 20K FO Grade D



DECK PLAN



OUTBOARD PROFILE

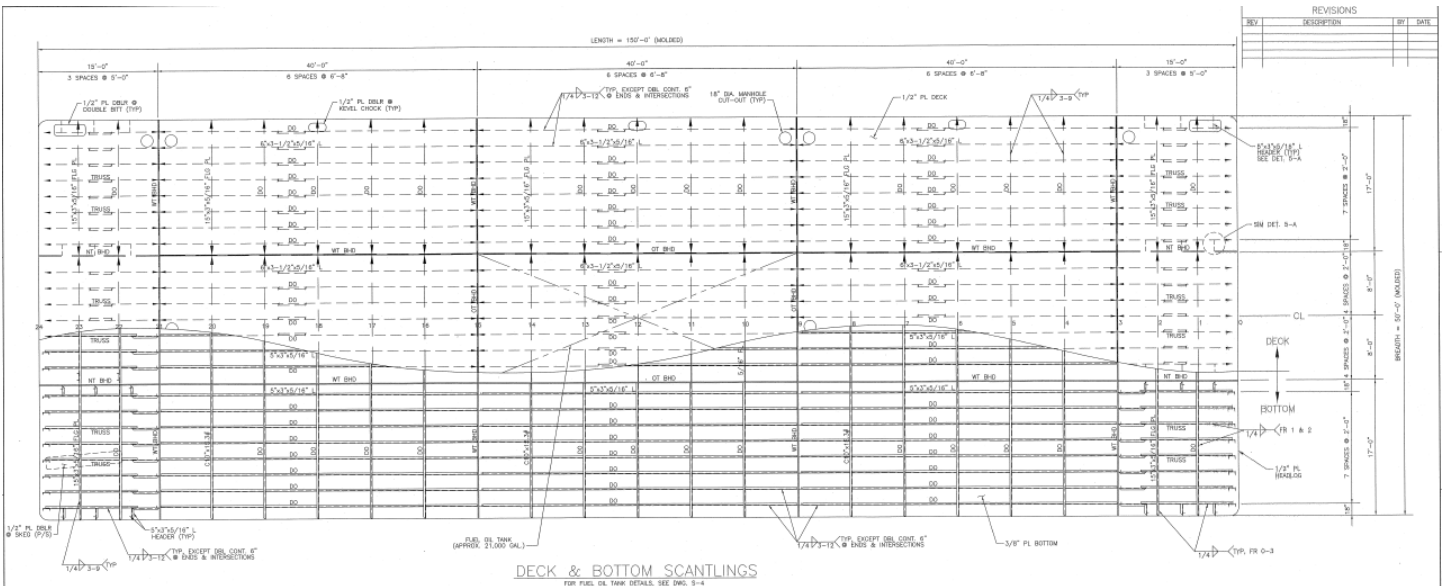


TOWING PADEYE DETAIL

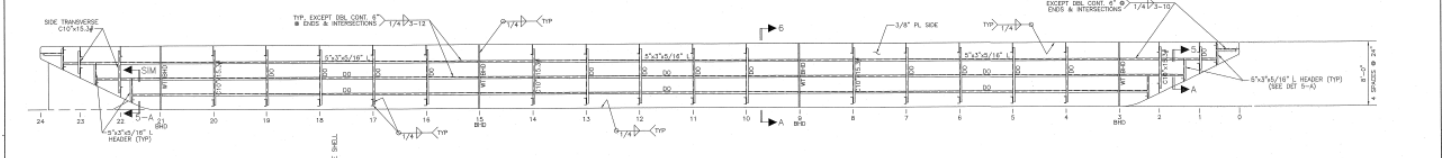
REVISIONS	
NO.	DESCRIPTION

CONRAD Shipyard, Inc.
 100'x50'x8'-0" DECK CARGO BARGE
 DECK ARRANGEMENT & OUTBOARD PROFILE

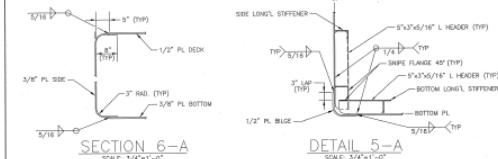
DATE: 11/26/20
 DRAWN BY: [blank]
 CHECKED BY: [blank]
 APPROVED BY: [blank]



DECK & BOTTOM SCANTLINGS



SIDE SCANTLINGS



SECTION 6-A

DETAIL 5-A

TO CLASS:
 ABS CLASS #A1 BARGE

GENERAL NOTES:

- DECK DESIGNED FOR MAXIMUM UNIFORM DRY LOAD = 2000 PSF.
- CENTER COMPARTMENT, FRAME 9-15, TO BE FUEL OIL TANK. TANK VENT HEIGHT TO BE 30" ABOVE DECK.
- ALL OTHER COMPARTMENTS ARE VOIDS. VENT PIPES TO BE INSTALLED IN COMPARTMENTS ADJACENT TO F.O. TANK.

REVISIONS	
NO.	DESCRIPTION

CONRAD Shipyard, Inc.
 100'x50'x8'-0" DECK CARGO BARGE
 SCANTLINGS PLAN

DATE: 11/26/20
 DRAWN BY: [blank]
 CHECKED BY: [blank]
 APPROVED BY: [blank]