

# Ari Cruz



**OFFICIAL#** 1029299 **CLASS:** LOAD LINE ONLY **IMO/OTHER#** 9107849



## VESSEL DESCRIPTION

TYPE	PUSH/TOW/AH SHALLOW DRAFT
SERVICE	Coastwise
HOME PORT	PALMER, AK USA
BUILD DATE	1995
BUILDER	McDermott Ship Building.
HULL#	1029299

## DIMENSIONS

GT ITC	210
DOMESTIC GT	117
NT ITC	63
DOMESTIC NT	80
LENGTH	82 Ft.
BREADTH	28.5 Ft.
DEPTH	12 Ft.
LOA	88 Ft.

## TANKS

FUEL	34,078 gal.
LUBE	700 gal.
FRESH WATER	2,951 gal.
BALLAST WATER	40,150 gal.

## MACHINERY

CONFIG	Twin Screw
MAINS	(2) CAT 3412C
AUX	(2) CAT 3304B
HOTEL	N/A
MAX HP	1,450
BOLLPULL	25,000 LBS (CALCULATED)

## ENGINE ROOM EQUIPMENT

WATER MAKER	YES
AIR COMPRESSORS	2 EA
BUILGE VAP	N/A
FUEL CENTRIFUGE	1 EA HUTCHING & HAYES
STEERING	ELECT/HYD
FIRE PUMPS	1 EA
MSD	YES UP TO 12 PERSONS

## CREW REQUIREMENTS

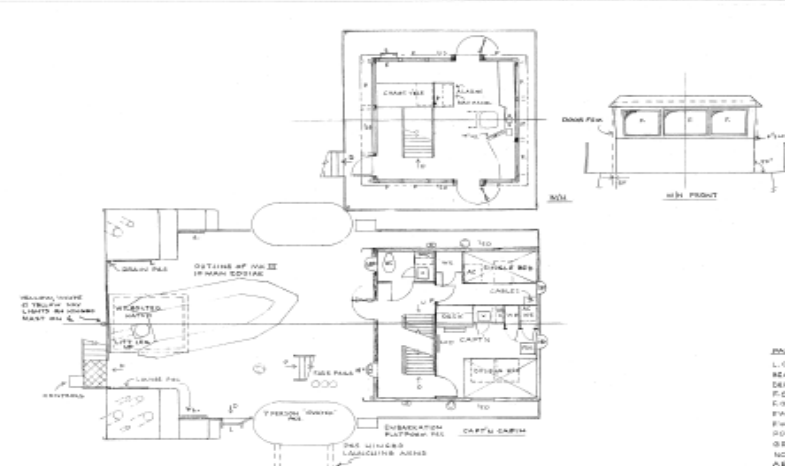
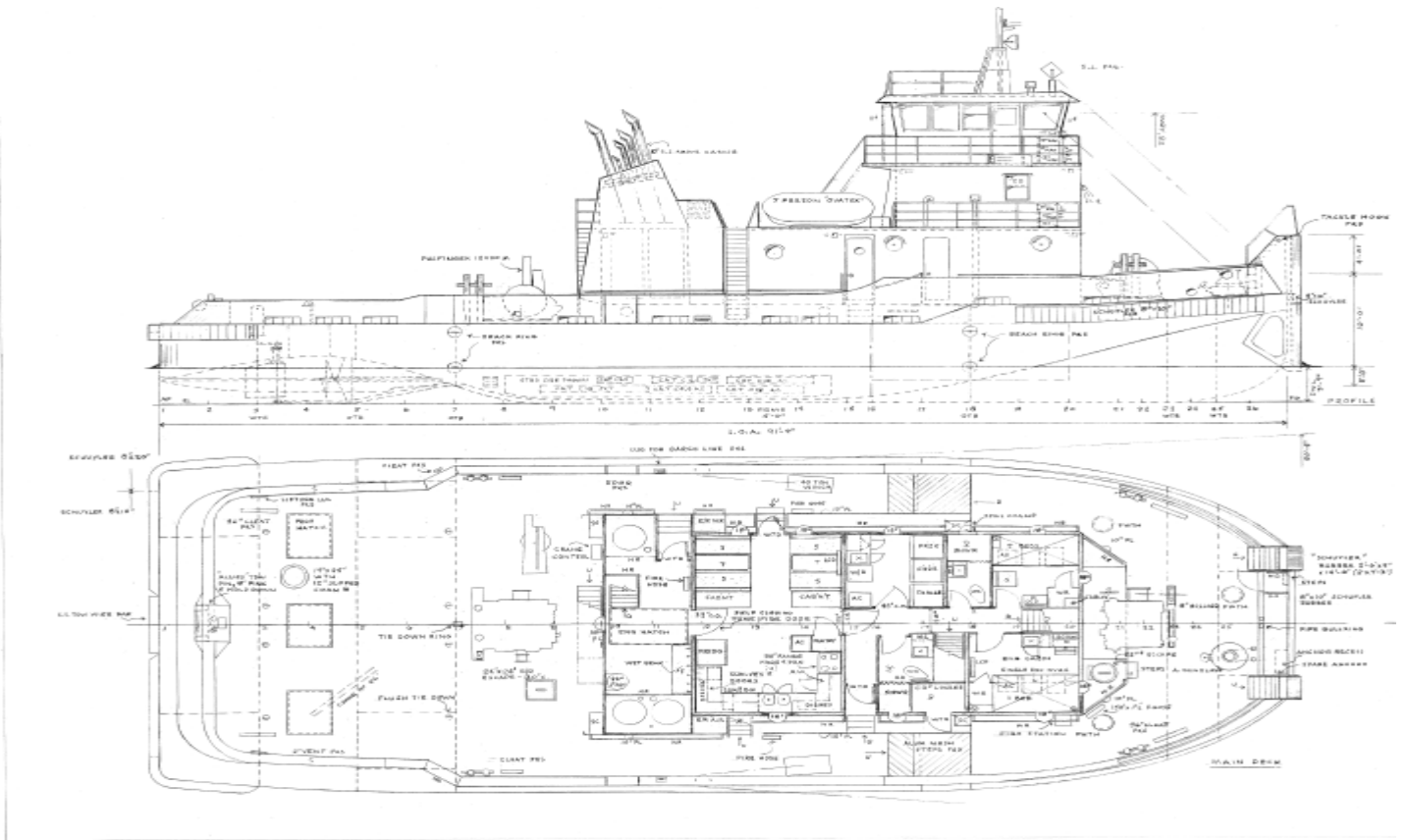
FULL OCEAN	5
AH MODE	6

## DECK EQUIPMENT

ANCHOR GEAR	MARKEY HYD	750LBS ANCHOR
BOW WINCH	MARKEY ELEC	WYWS-10-45
BOW LINE	2" PLASMA	
TOW WINCH	MARKEY ELEC	TYS-24
TOW WIRE	GALVANIZED	1,500' x 1.375"
DECK CRANE	North American Crane	8,000 LBS
WORK BOAT	LUND	14 Ft.
SIDE WINCHES	NABRICO	65TON
LIFE RAFTS	Viking	10 Man (1) EA

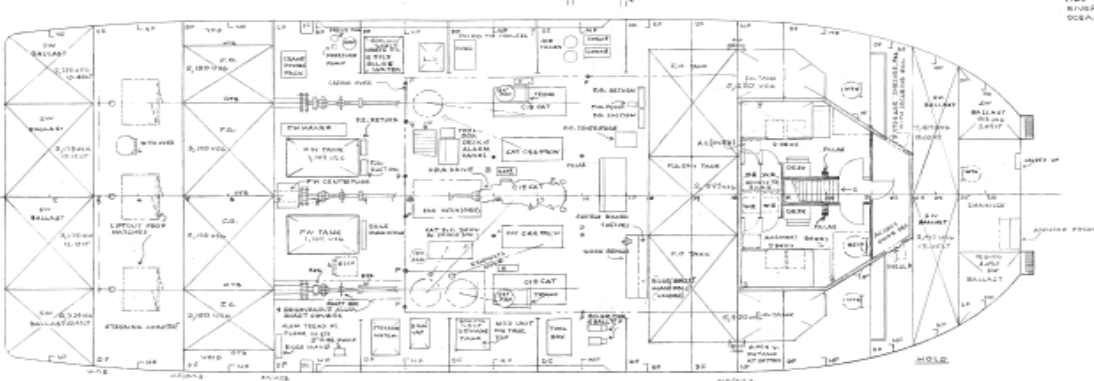
## ELECTRONICS

VHF	2 EA SEA156
SAT PHONE	YES
RADARS	2 EA. FURUNO FR – 8100D
FLIR CAMERA	YES?
NAV COMPUTERS	2 EA
AIS	1 EA
SAT COMPASS	2EA
GPS	2 EA
AUTO PILOT	SIMRAD



**PARTICULARS**

L.O.A.	81'-4"
BEAM MID	26'-0"
DEPTH	9'-0"
P.O.	45% OCEAN 23.50008
C.B.	34% 6.00008
P.M.	0.00000
P.W.	0.00000
POWER	7 x CUMCATS 1800 SHP TOTAL
GROSS TONS	LESS THAN 200
INSPECTED BY	USCG
ABS CLASS	(NOT CLASSED)
RIVER DRAFT	3'-0"
OCEAN DRAFT	2'-0"



**71-9" RIVER & OCEAN TUG**

**CRUZ MARINE LLC**

**AS BUILT GENERAL ARRANGEMENT**

**A.G. McILWAIN LTD.**

ARCHITECTS

1000 WEST 10TH AVENUE SUITE 100 DENVER CO 80202

TEL: 303.733.1100 FAX: 303.733.1101

WWW.AGMILWAIN.COM